

Barco portacontenedores

Tipo post-panamax

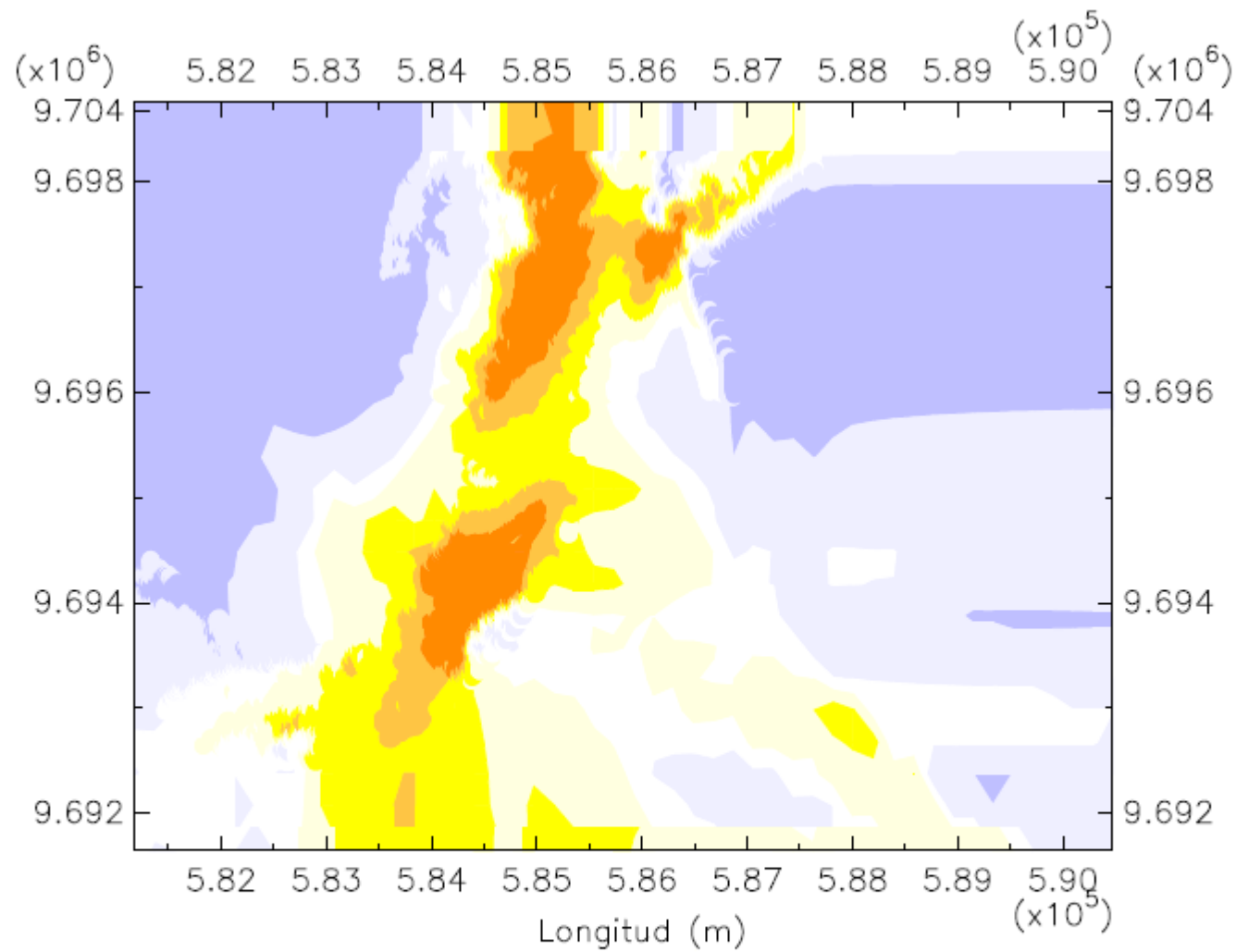
Eslora: 318.20 m

Manga: 42.800 m

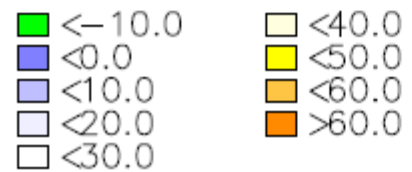
Calado: 11.60 m

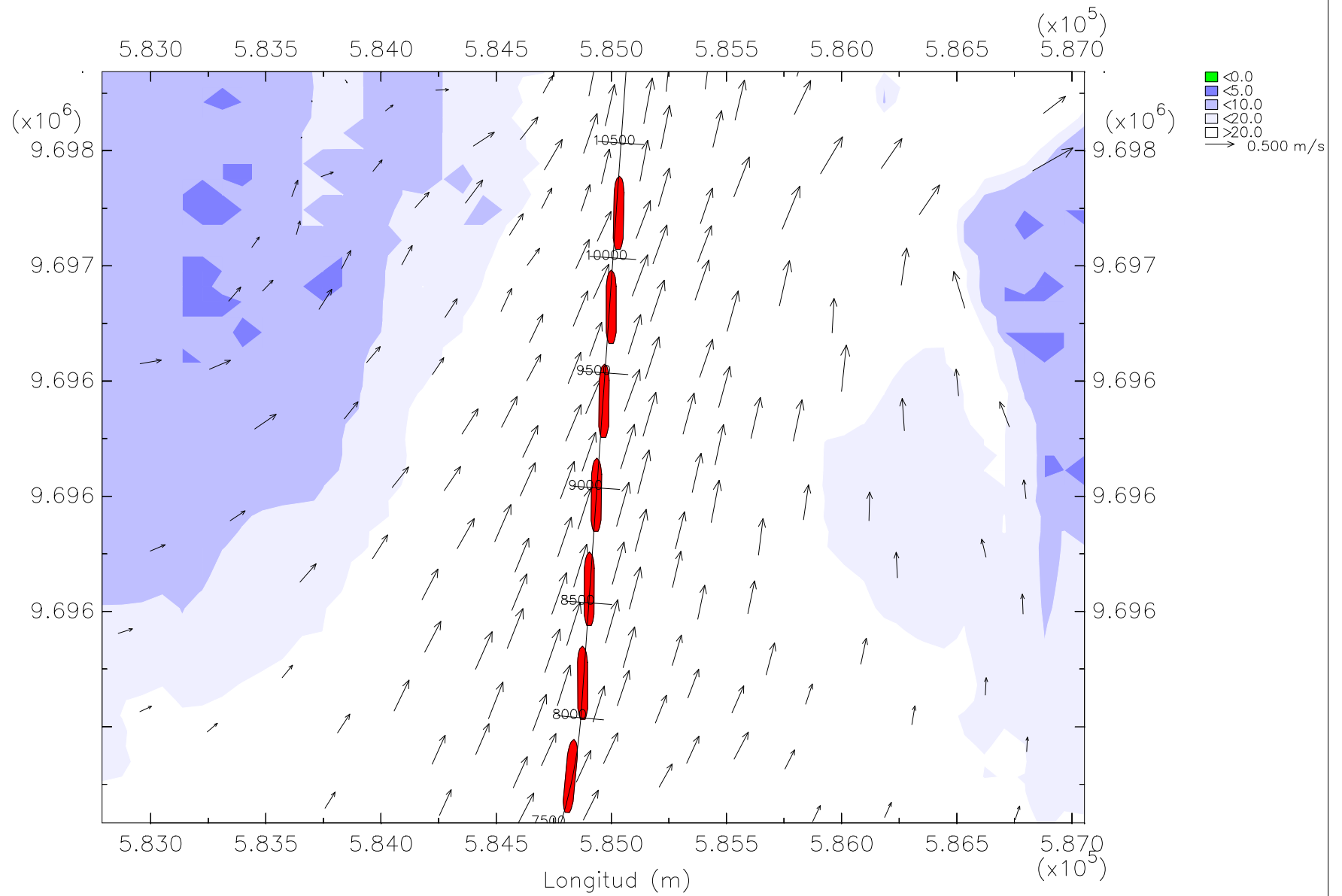
En la zona 1, tramo 3

Bajo condiciones de llenante

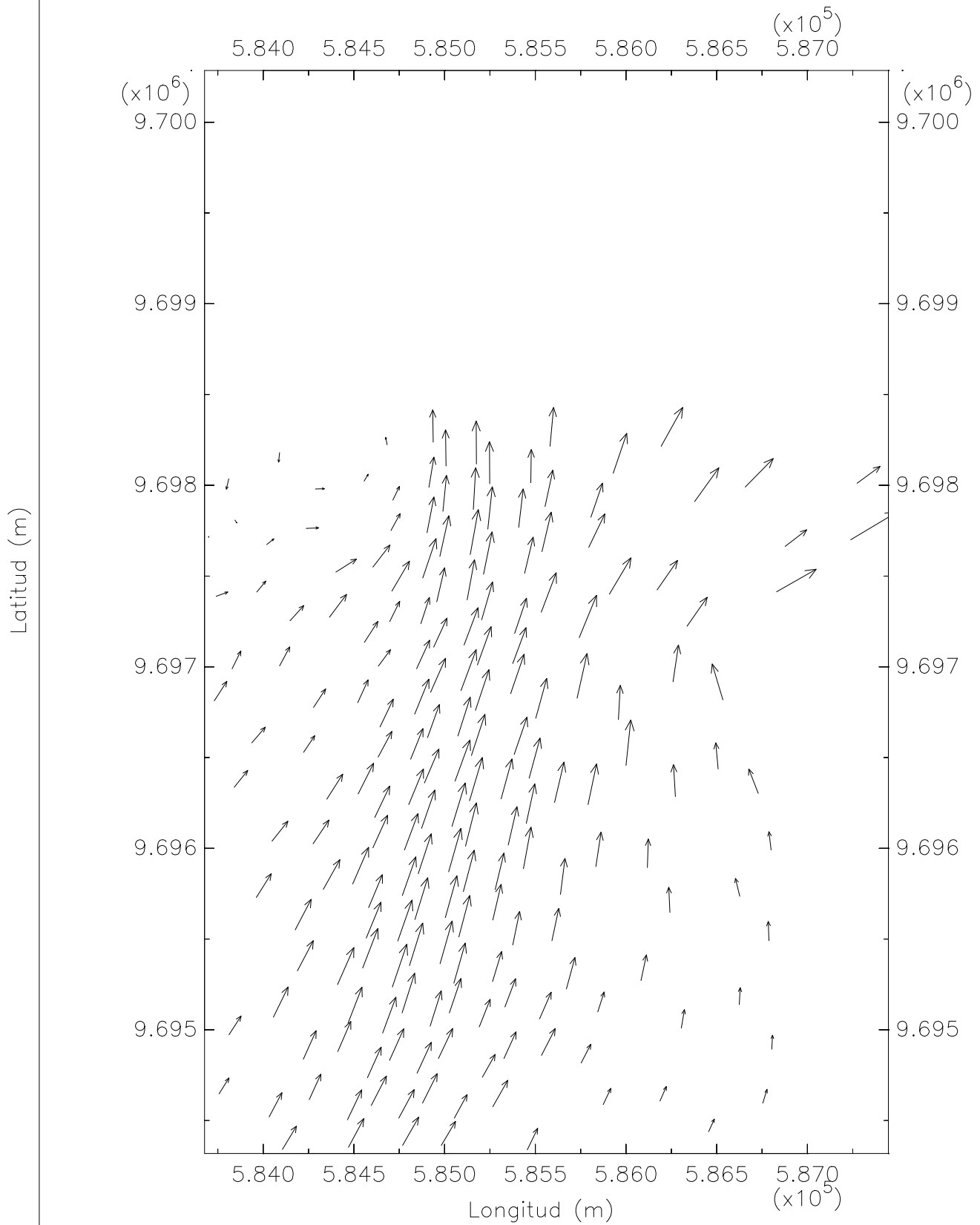


Zona 1 Tramo 3 Profundidad



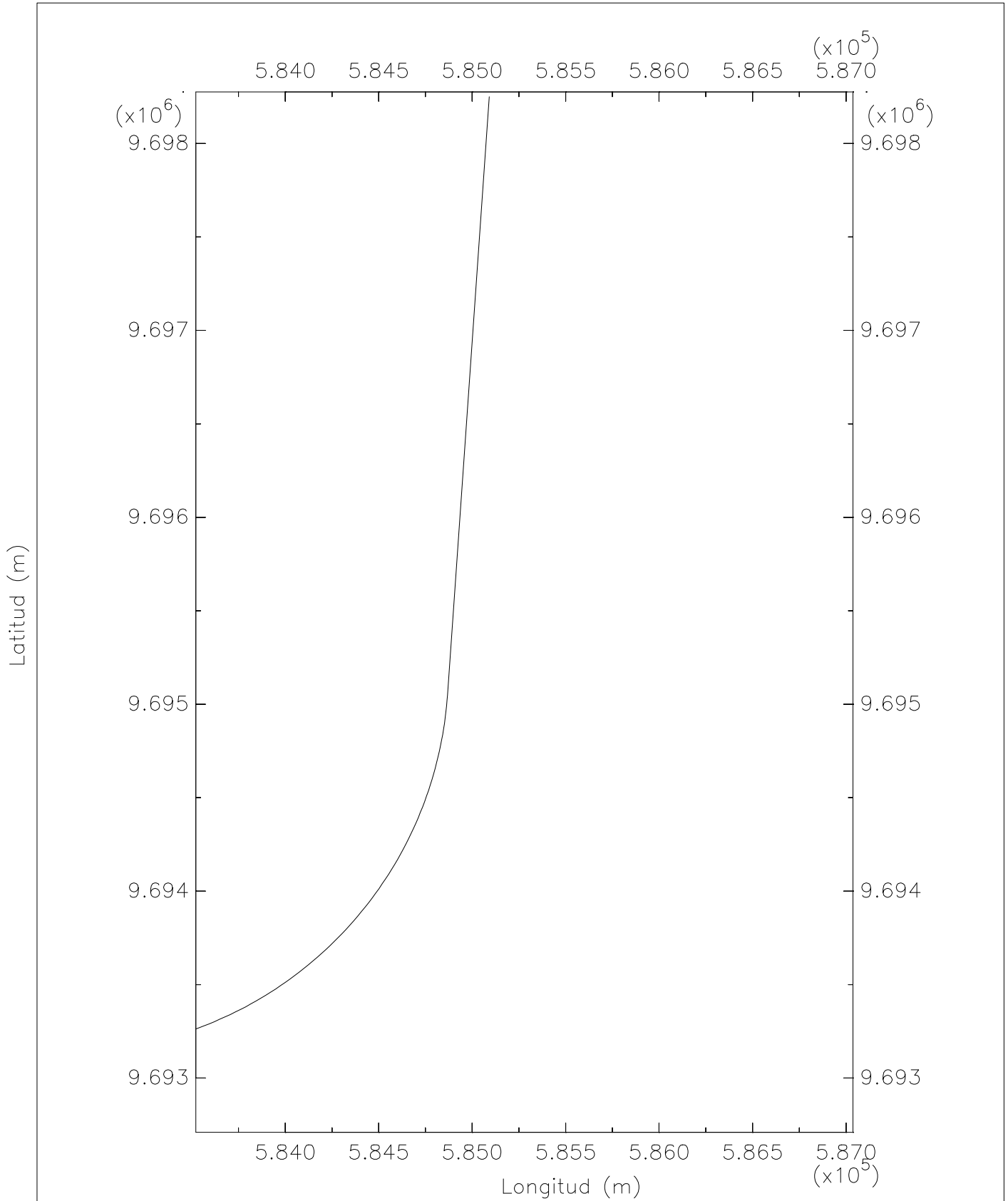


Z1FT1 Corriente y trayectoria del barco portacontenedores post-panamax

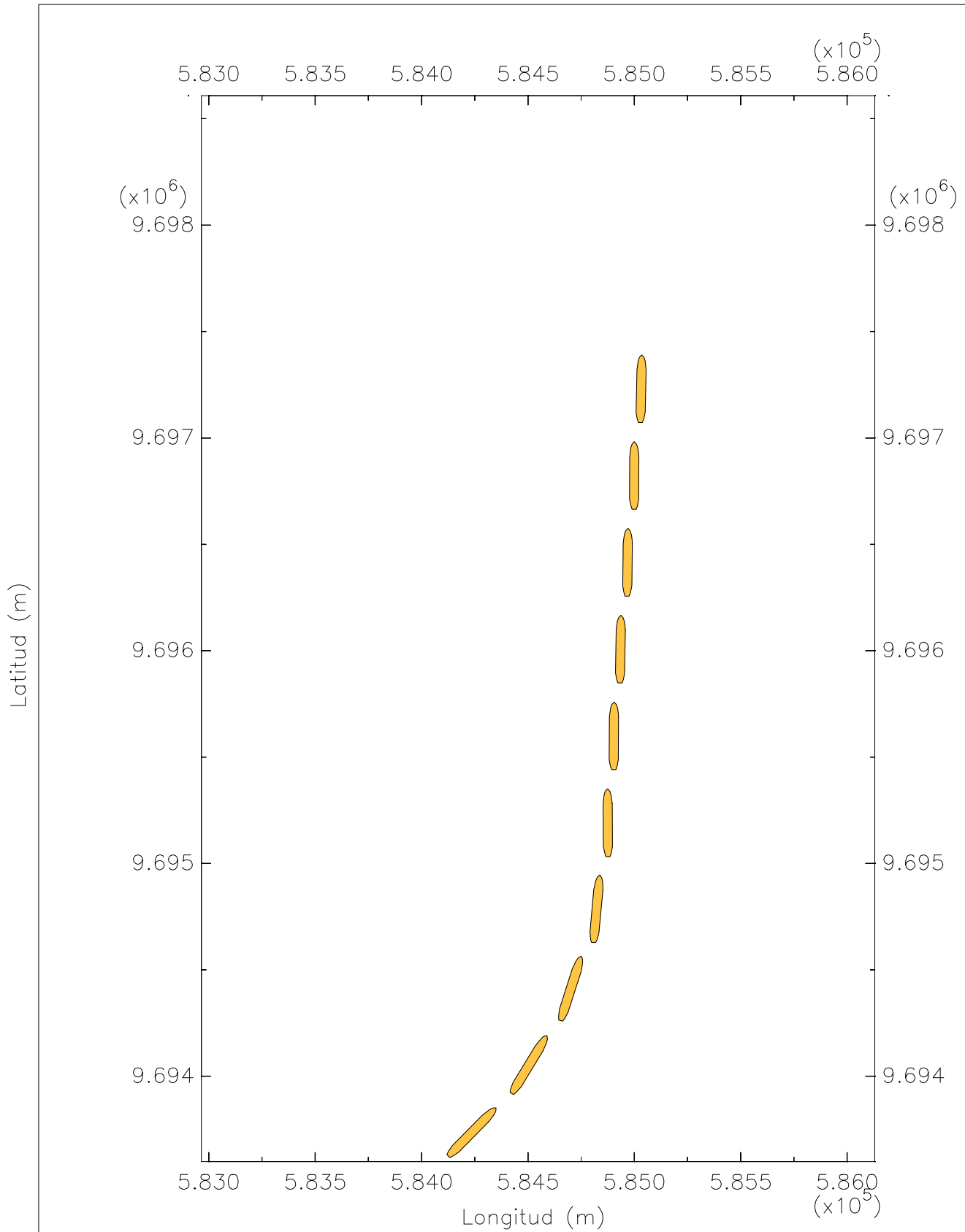


Zona 1 Tramo 2 Corriente

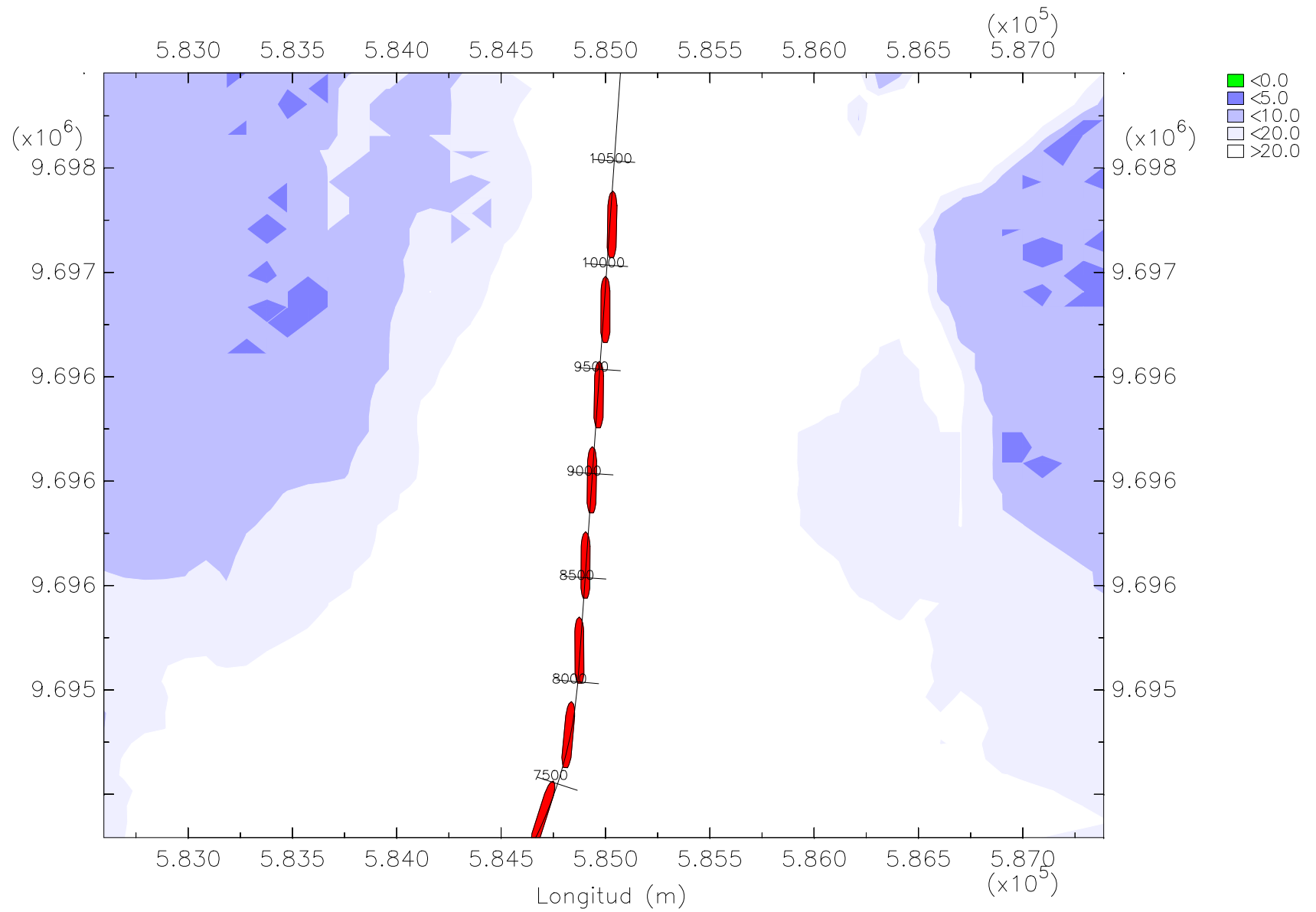
→ 0.500 m/s



Zona 1 Tramo 3 Eje canal



Z1T3 Trayectoria del barco portacontenedores post-panamax



Z1T3 Trayectoria del barco portacontenedores post-panamax con profundidad